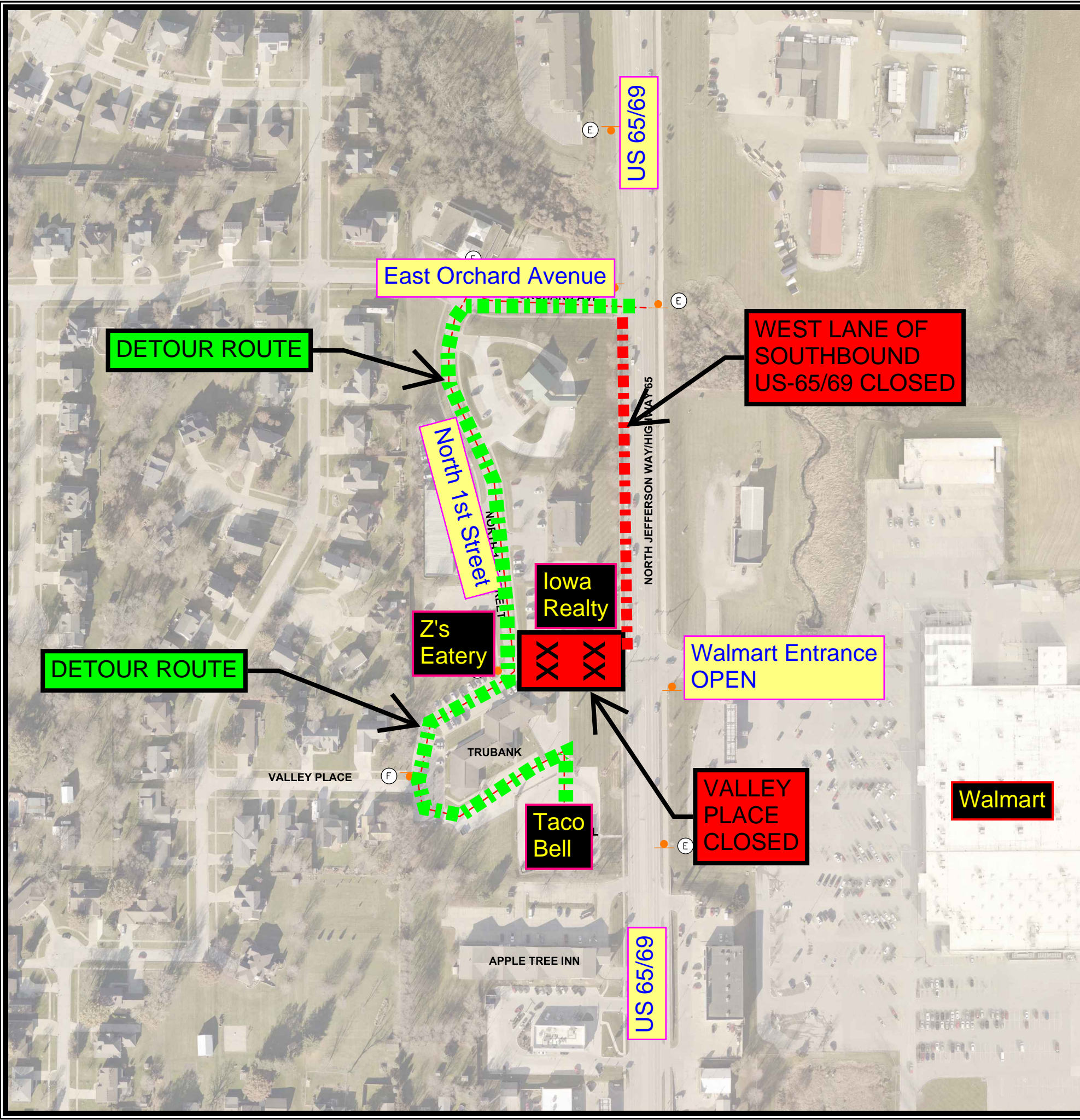
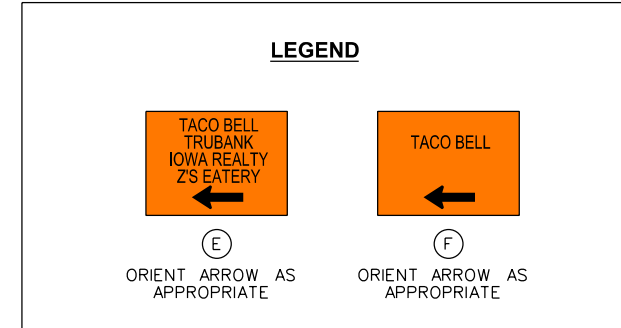
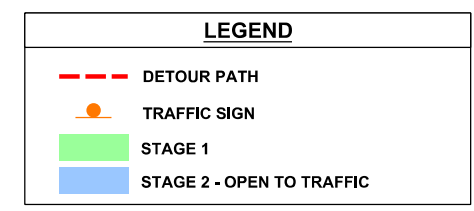
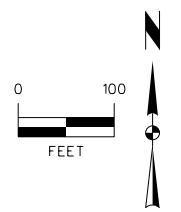


V:\ReLibery\A\CADD\Standard\WorkSpace\Standard\Printing\Per... Tables\table.tbl  
 V:\ReLibery\A\CADD\Standard\WorkSpace\Standard\Printing\Per... Tables\table.tbl  
 9/8/2021 8:19:51 AM  
 9/8/2021 8:19:51 AM  
 Roundabout  
 \Caron\volterra\Projects\2021\1210135\_ON\_CADD\_CD\_1210135\_012\_for\_indianola\_snyder-media.dgn



**TRAFFIC CONTROL NOTES**

1. USE IOWA DOT STANDARD ROAD PLAN TC-419 FOR SB NEAR LANE CLOSURE OF US 65/NORTH JEFFERSON WAY.
2. CLOSE NORTHBOUND CONTINUOUS LEFT-TURN LANE COMMENCING AT THE APPLE TREE INN DRIVEWAY AND ENDING AT VALLEY PLACE. CLOSURE SHALL BE IN EFFECT OVER THE DURATION OF STAGE 1 CONSTRUCTION. USE STANDARD ROAD PLAN TC-429.
3. OMIT NORTH BOUND LEFT-TURN SIGNAL PHASE IN THE CABINET OVER THE DURATION OF STAGE 1 CONSTRUCTION.
4. WAYFINDING SIGNS TO PROVIDE EQUIVALENT VISIBILITY AS 48"X48" W20-5 SIGN.
5. USE TC-202 WHEN NEAR LANE CLOSURE OF US 65/NORTH JEFFERSON WAY IS NOT IN USE.
6. OMIT ALL EASTBOUND PHASES IN TRAFFIC SIGNAL CABINET. OMIT NORTHBOUND LEFT TURN PHASE IN TRAFFIC SIGNAL CABINET. OMITTING PHASES MUST BE ACCOMPLISHED PRIOR TO PAVEMENT REMOVAL.
7. DO NOT RESTRICT PUBLIC ACCESS ON ADJACENT SIDEWALKS DURING CONSTRUCTION. KEEP SIDEWALKS CLEAR OF EQUIPMENT AND MATERIALS AT ALL TIMES EXCEPT WHERE NOTED AS CLOSED. CLEARLY MARK SIDEWALK CLOSURES AND BARRICADE AS NECESSARY TO PROTECT UNCURED PAVEMENT.



MARK	REVISION	DATE	BY
Engineer: JAS	Checked By: DNM	Scale: 1" = 100'	Field Bc:
Technician: JDS	Date: 05/17/2021	Field Bc:	Project No: 1210135
			Sheet J.3

**VALLEY PLACE RECONSTRUCTION**  
**INDIANOLA, IOWA**  
**TRAFFIC CONTROL - STAGE 1**  
**SNYDER & ASSOCIATES, INC.**

2727 S.W. SNYDER BLVD.  
 ANKENY, IOWA 50023  
 515-964-2020 | www.snyder-associates.com

Project No: 1210135  
 Sheet J.3